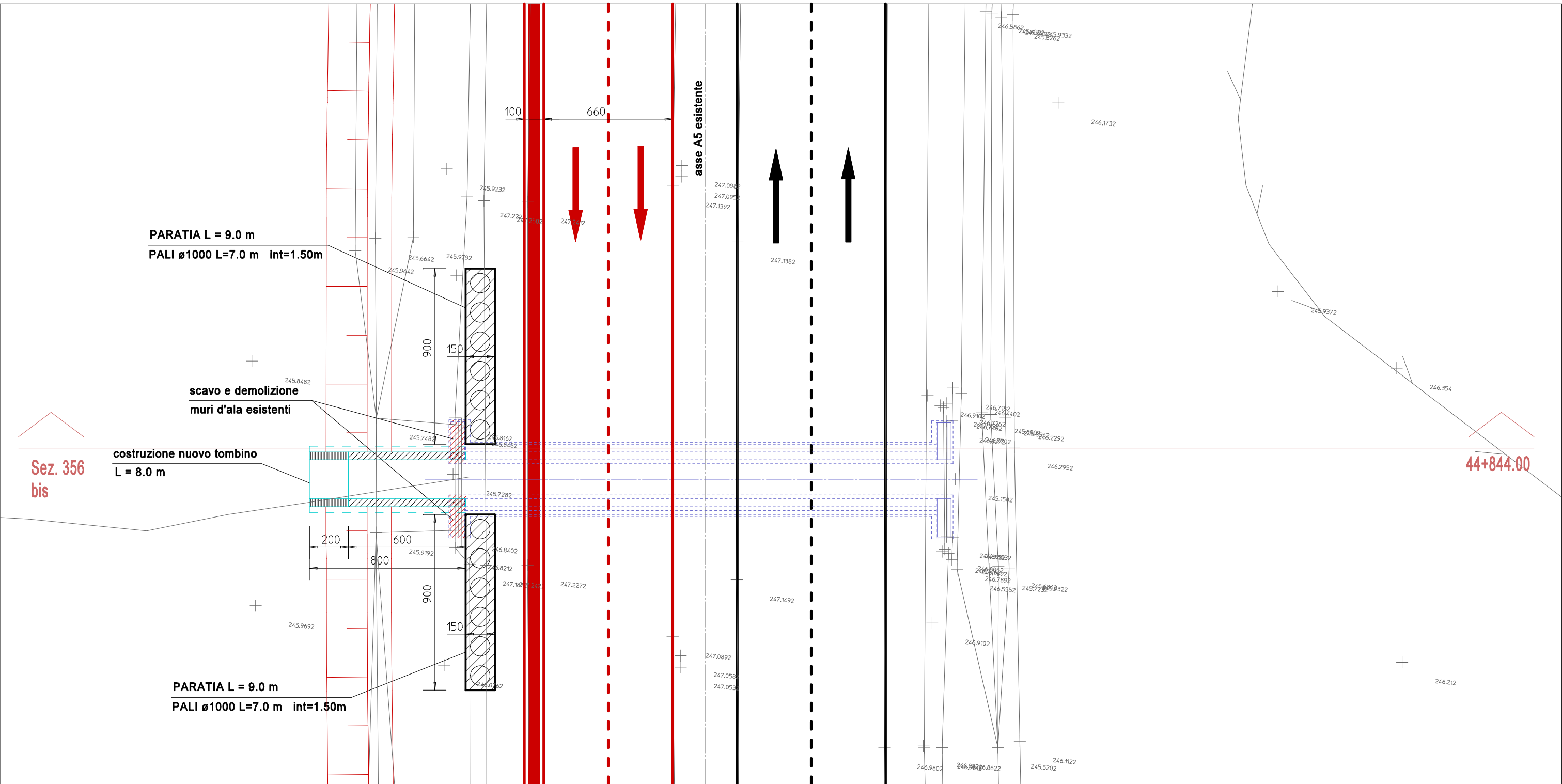
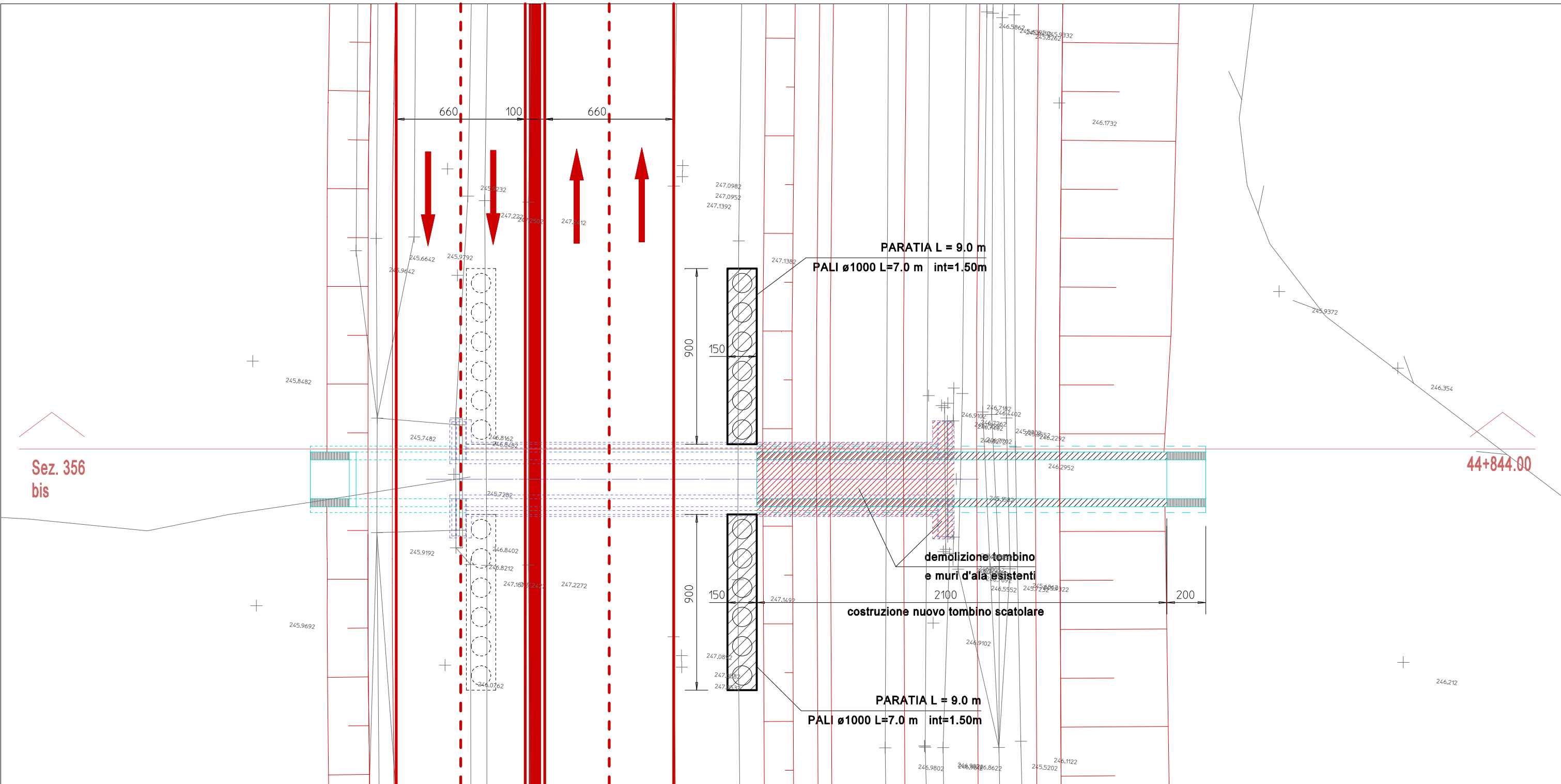


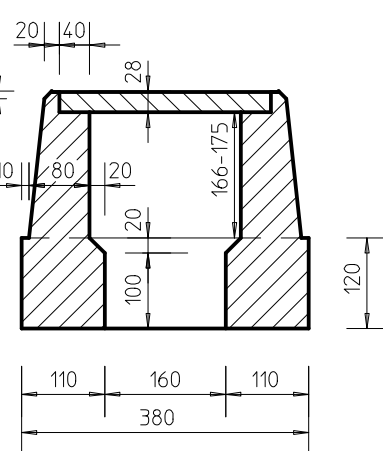
FASE 2



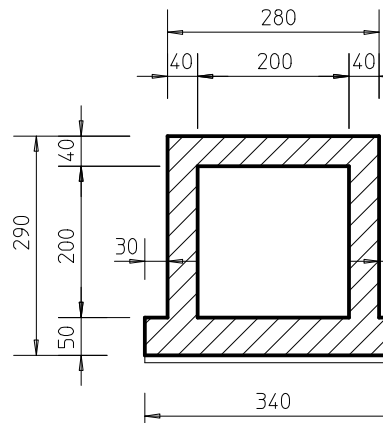
FASE 4



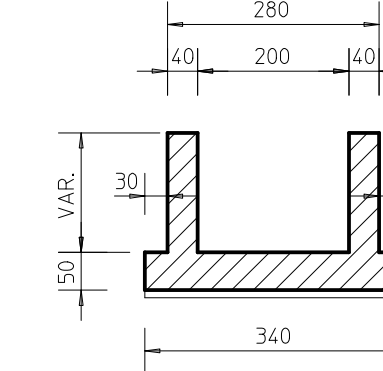
SEZIONE TIPO TOMBINO ESISTENTE
SCALA 1 : 100



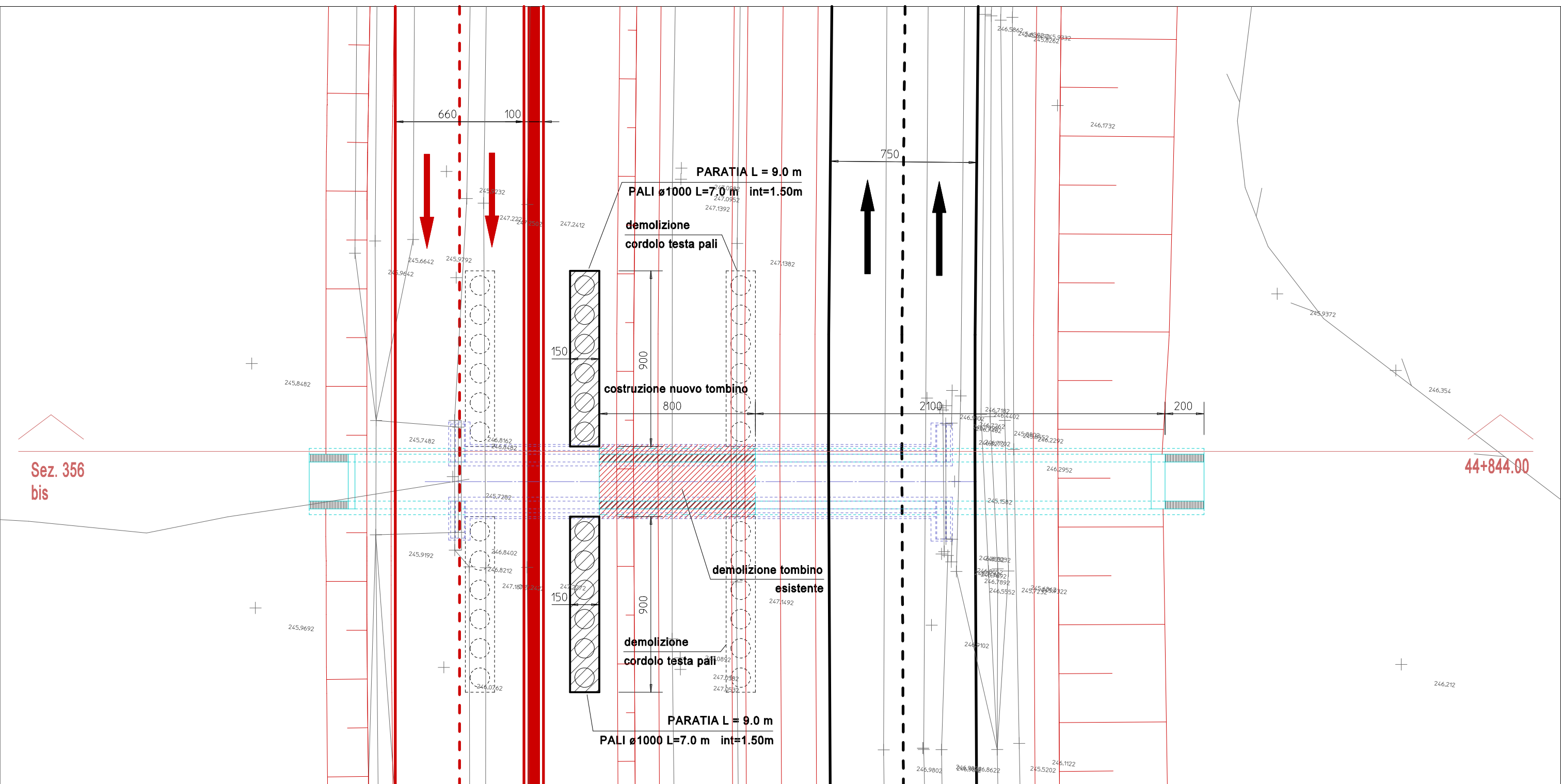
SEZIONE TRASVERSALE
NUOVO SCATOLARE
SCALA 1 : 100



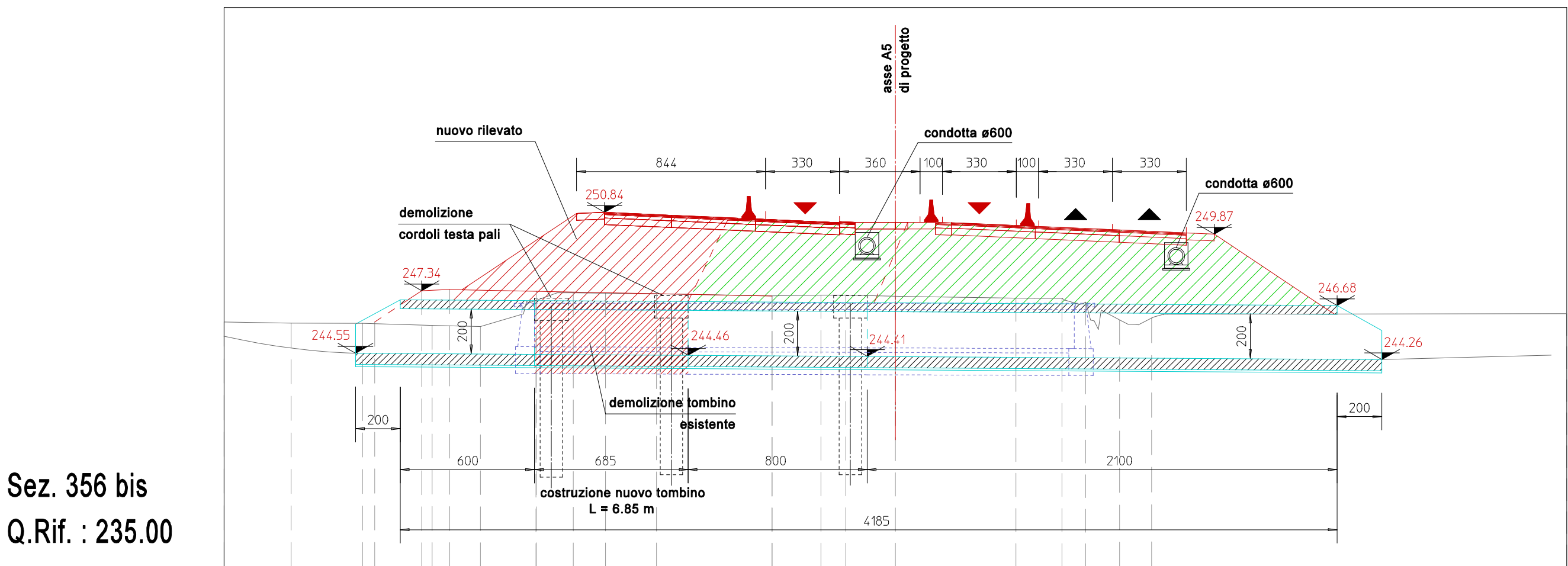
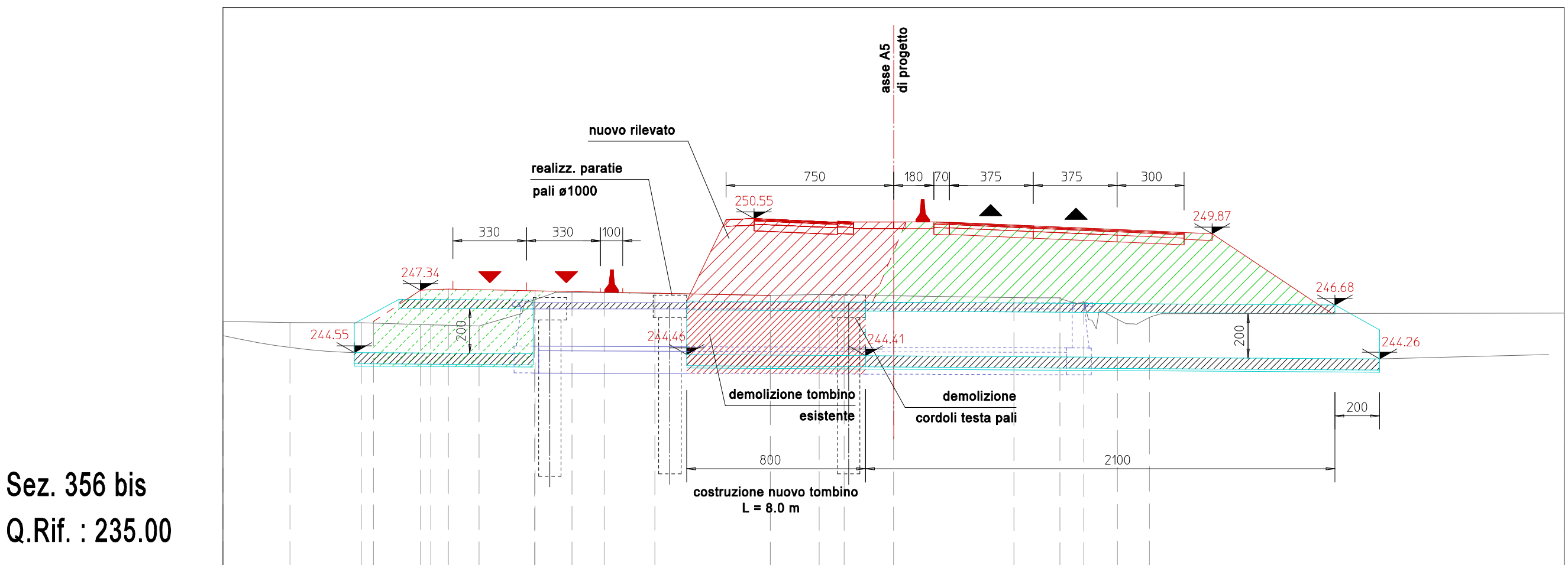
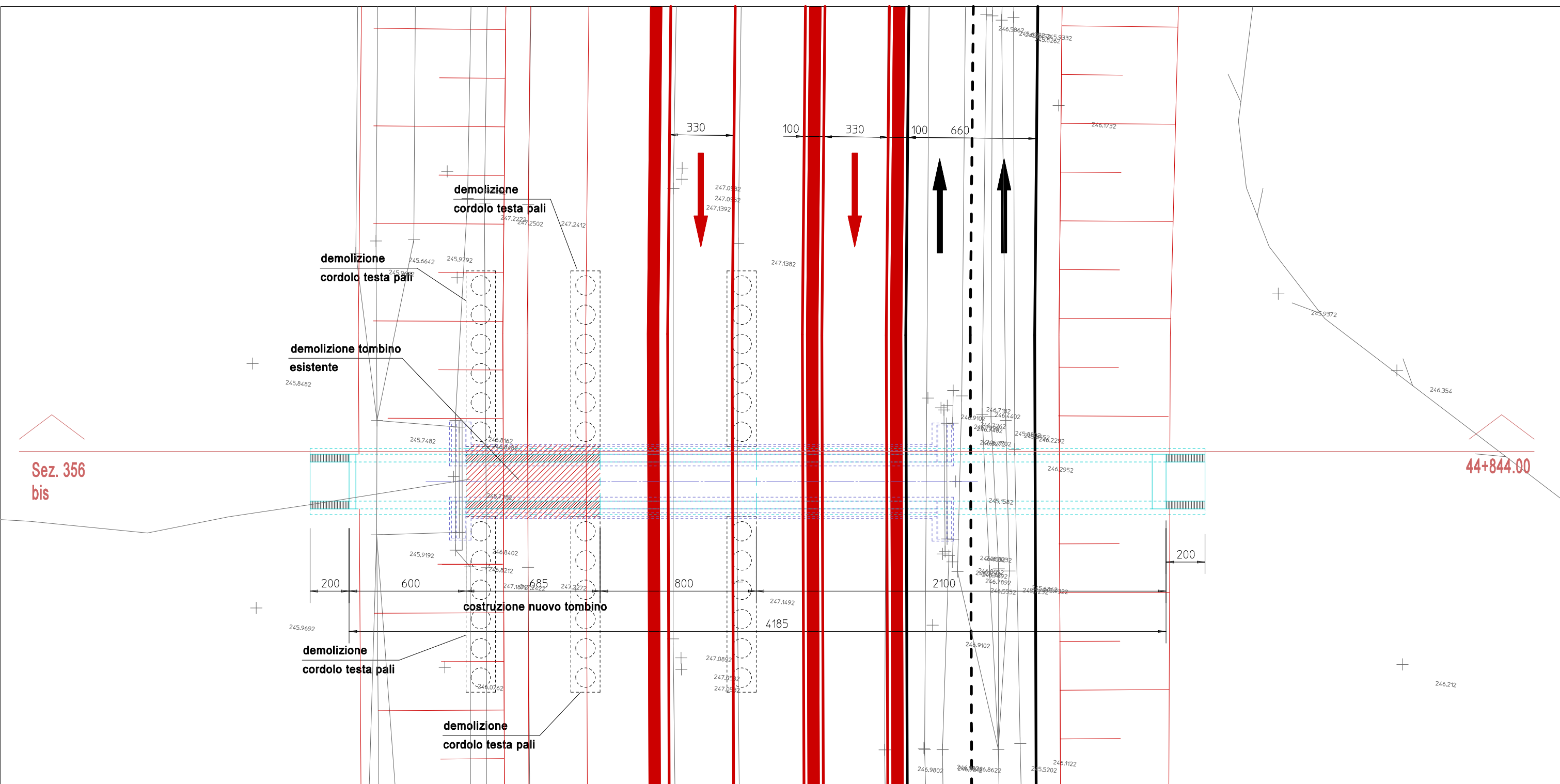
SEZIONE TRASVERSALE
IMBOCCHI LATERALI
SCALA 1 : 100



FASE 5



FASE 6



ATIVA

TORINO - IVREA - QUINCINETTO
IVREA - SANTHIA'
SISTEMA AUTOSTRADALE
TANGENZIALE DI TORINO

VISTO per FATMA S.p.A.

Amministratore Delegato
Dott. Ing. LUIGI CRESTA

**AUTOSTRADA A4/A5 - A5 TORINO QUINCINETTO
IVREA SANTHIA'**

**NODO IDRAULICO DI IVREA
2° FASE DI COMPLETAMENTO**

PROGETTO DEFINITIVO

**PARTE STRUTTURALE - OPERE MINORI
TOMBINO SCATOLARE AL km 44+844
DISEGNO D'INSIEME**

IL PROGETTISTA	REDATTO	CONTROLLATO	APPROVATO
 Il Direttore Tecnico Dott. Ing. ROBERTO PETRALI ordine degli Ingegneri di Milano n° 14638	IGEAS P. Einaudi	IGEAS M. Barale	ATIVA ENGINEERING V. Palmisano
DATA GIUGNO 2012	REVISIONE	DATA	
SCALA 1 : 200			
UFFICIO	COMESBA	N° PROG.	FASE
SSP0101A05000PD	STR50400		